

Submitted by Miles  
6/27/2023 Mulliken

## Proposed Methow Aquatic District

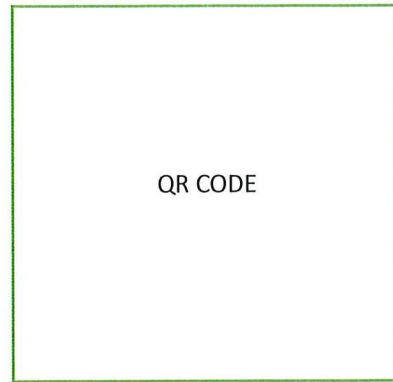
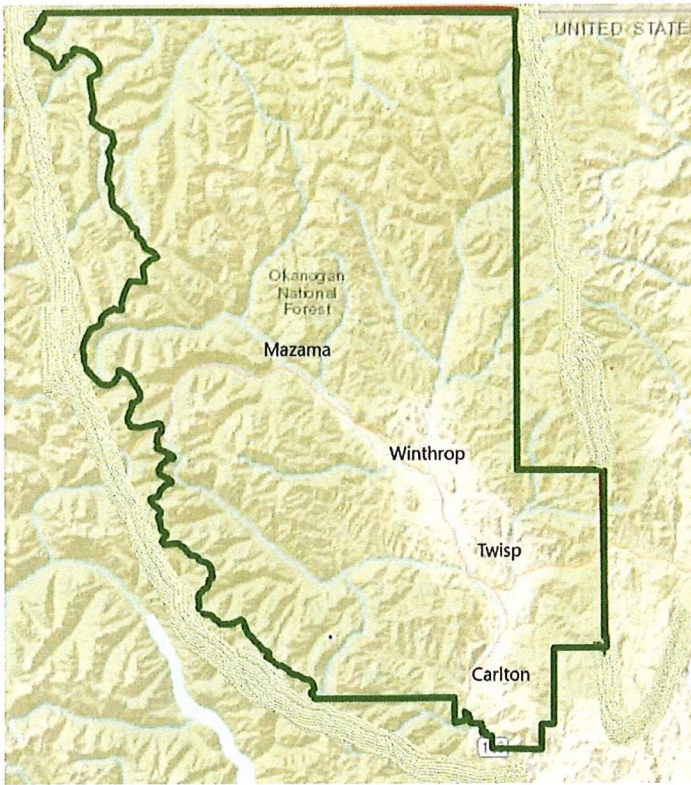
- The current pool has reached the end of its useful life, and there is no obvious funding source for aquatics in the Methow.
- How do we create a sustainable aquatic facility in our community?
  - 'Our community' is defined primarily as the Methow Valley School District, and secondarily extending north and east of Omak, and south of Chelan.
  - Twisp sits in the center of these boundaries.
- Pools don't often generate sufficient income to cover operating costs
  - A junior taxing districts is an equitable, sustainable system for funding and governance
    - Metropolitan Park Districts
      - Acquire and sell property
      - Issue bonds, and service debt
      - Construct and maintain facilities
      - Employ a range of personnel
      - A one time vote vs. a vote every six years
      - Highest maximum levy rate of park districts
- Who is involved
  - Friends of the Pool is supporting the summer operations at the Wagner Pool, and managing the capital campaign to build the Methow Aquatic Center (MAC).
  - A Political Action Committee (PAC) has been formed to gather support for the Metropolitan Park District (MPD) with the goal of passing a ballot measure in November.
- Formation
  - An interlocal agreement can be made between each governing body represented within the MPD boundary (the Methow Valley School District).
  - Those bodies approve the MPD by resolution and nominate one of their members to serve on the board. (One year terms)
  - Twisp and Winthrop also each appoint one at-large member to the board.
- Levy/Voting
  - The MPD is voted into existence by electors of the district boundary
    - This is a simple majority vote
    - Metropolitan Park Districts are junior taxing districts
    - MPD's may levy up to \$0.75/assessed \$1,000, this rate will be set by the board once elected.
      - The first \$0.50 falls in level 5 and the remaining \$0.25 falls in level 4 of the '5.90'
  - Purpose: Functions of the MPD are limited by the ballot resolution.
- Activities
  - A new seasonal outdoor pool would continue to be in competition with Brewster, Omak, and Okanogan. An indoor facility would serve more customers than the current pool.
  - The proposed aquatic center will host recreation and competition activities.

- Beyond swimming. The first priority of the capitol campaign is to construct a new pool. It is not limited to that function and its success could create space for additional recreational activities.
- Facility and Location
  - The new aquatic center will have two pools. One a regulation size competition pool, the other a shallower, warmer pool for swimmers of all capabilities.
  - The current site is too small for the new facility.
  - The preferred site is at the intersection of East County Rd and Highway 20.
  - All potential sites are in Twisp.
  - The School District is currently planning for additional educational facilities. Citing the pool at the school would also restrict use of the center.

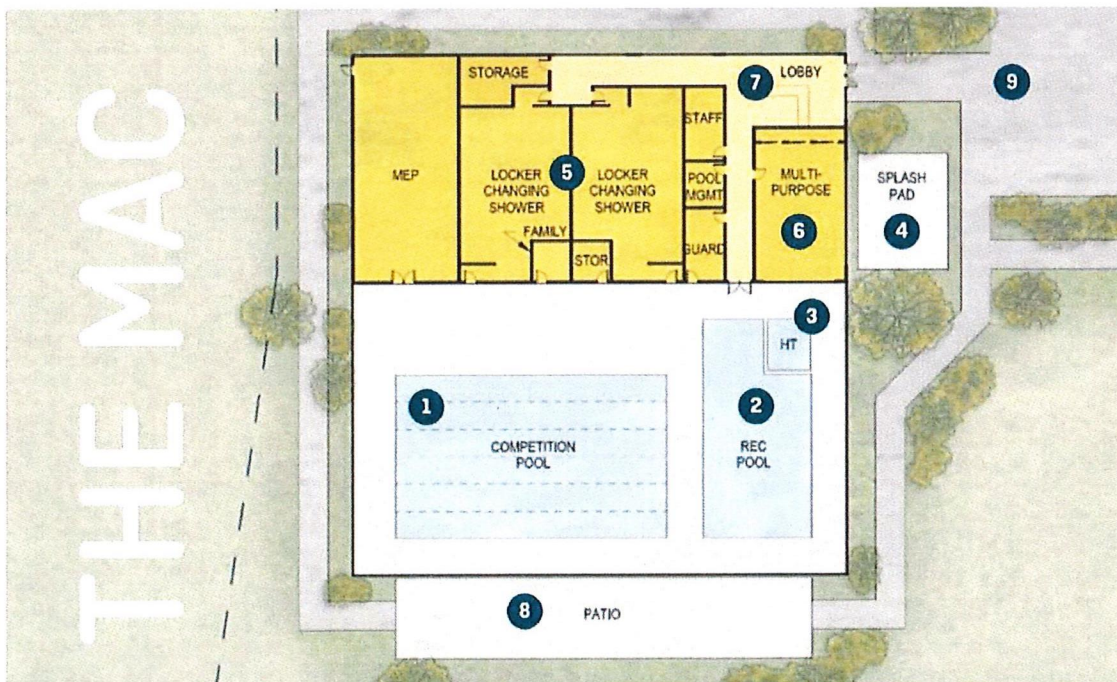
**Full Text of Measure:**

**Proposition 1. [Methow Aquatics District].** A petition of the voters has been submitted concerning formation of a metropolitan park district. If approved, this proposition would create a district under chapter 35.61 RCW, to be known as the Methow Aquatics District, to provide ongoing funding to develop, construct, operate, and maintain the Methow Aquatics Center and related existing and future facilities. The District would have the powers provided under chapter 35.61 RCW, excluding eminent domain, but including, among others, to levy regular property taxes up to 75 cents per \$1,000 assessed value, and its boundaries would be coterminous with the boundaries of Methow Valley School District 350. The District would be governed by a five member board appointed by the Okanogan County Commission and the Twisp and Winthrop Town Councils as provided by interlocal agreement approved by the three jurisdictions.

- For the formation of a metropolitan park district to be governed by a board appointed by the Okanogan County Commission and Twisp and Winthrop Town Councils
- Against the formation of a metropolitan park district.



Maximum Levy at \$.75/1000		
Property	Per Year	Per Day
\$300K	\$225	\$0.62
\$500K	\$375	\$1.03
\$700K	\$525	\$1.44



The above drawing depicts conceptual square footage for planning purposes only (by Johnston Architects)

1. A six-lane pool - for laps, exercise, racing, and recreation
2. A warmer recreational pool for swim lessons, exercise classes, and fun
3. A spa hot tub for therapy and relaxation
4. An outdoor jetted splash pad for kids
5. Changing facilities for individuals and families
6. A multi-purpose room for parties, training, and programs
7. Admin space and a front desk
8. Outdoor open space
9. Parking

## FAQs and Talking Points for Petition/Voters

### How much will it cost and who pays for it?

**Short Answer:** This is an investment in health and safety paid for by all properties in the Methow Valley School District.

**Follow up:** This district is critical for long-term operating funds so that we can access other funding for building it. Unless we have a guaranteed operating fund, we won't be eligible for state, federal or private grants.

- Construction estimate is **\$20 Million**. If our private fundraising efforts exceed our expectations, a bond may not be necessary.
- **The benefits of having a safe place to learn to swim and stay healthy in all stages of life far outweigh the initial cost.**

### Do we need an indoor pool in our small community?

**Short Answer: Yes.** Pools save lives. **Swimming is a life skill.** It's important everyone knows how to swim.

Pools are essential for vibrant communities of all sizes and an essential **PUBLIC INVESTMENT** in **SOCIAL INFRASTRUCTURE**.

**Follow up:** We have a **growing number of seniors**, and swimming is one of the best ways for **older adults to stay fit**.

We love our outdoor pool, but increasingly wildfire smoke limits the season, and an indoor pool would create benefits year round.

- 
- *In Washington State, 70 percent of all drownings occur in open water and it is the leading cause of death among 1-4 year olds.*
  - *Participation in formal swimming lessons may reduce the risk of drowning by as much as 88 percent among young children aged 1 to 4 years.*
- 

### How do you staff a pool year-round when the pool can't get lifeguards now?

**Answer:** Thank you for bringing up this important point! Thankfully, we've never had to close the pool due to staffing, but a year-round pool will bring year-round jobs to our community and help with retaining guards, an important consideration in our economy for part- and full-time jobs.

### My property taxes just went up. How much more will this impact me?

**Short Answer:** At most, an operating levy will be 75 cents per 1,000 of assess value. That's about **\$1 per day** for the median home price in the valley.

**Follow Up:** The Methow Aquatics Center will be funded by the entire valley, whereas our current pool is only funded by Twisp taxpayers. This makes it a regional facility and more sustainable.

### Is it only going to be a pool? What about a gym?

**Answer:** To start, we are focused on replacing the Wagner Pool which has reached the end of its useful life.

**Follow up:** If private fundraising efforts exceed our goals or private sponsors fund other amenities, its possible to see more than a pool.

### Where will it be located?

**Answer:** We have not finalized a site, but centrally located somewhere in **Twisp is the preferred**.

**Why Twisp? Equity is driving the location:** Twisp has the highest population density. Located in Twisp, recreational access will be more evenly spread in the valley. It's more affordable than Winthrop and serves a lower economic profile many of whom don't access to the winter trails or rink. Second, to honor the legacy of the Wagner Pool, a longstanding cultural asset.

Feasibility and Cost Studies

State Environmental Policy Act (SEPA) Review

Public Hearings

Resubmittal of Petition

Election to Form District

Fiscal Administration

Annexation/Enlargement

Dissolution

Legislative History

## District Purpose

### Park and Recreation District

- To provide leisure time activities and facilities and recreational facilities, of a nonprofit nature as a public service to the residents of the geographical areas included within their boundaries ([RCW 36.69.010](#)).

### Park and Recreation Service Area

- To finance, acquire construct, improve, maintain, or operate any park, senior citizen activities center, zoo, aquarium, and, or recreational facilities as defined in [RCW 36.69.010](#) which shall be owned or leased, and administered by a city or town, or park and recreation service area ([RCW 36.68.400](#));
- To provide a higher level of park service ([RCW 36.68.590](#)).

### Metropolitan Park District

- To provide for the management, control, improvement, maintenance, and acquisition of parks, parkways, boulevards, and recreational facilities ([RCW 35.61.010](#)).

## Functions and Powers

### Park and Recreation District

- Acquire and hold real and personal property;

[Back to top](#)

### Park and Recreation Service Area

- Acquire, construct, own or lease, operate parks, senior citizen activities centers, zoos,

### Metropolitan Park District

- Purchase, acquire and condemn lands within or without the

- Dispose of real and personal property;
  - Make contracts;
  - Sue and be sued;
  - Borrow money;
  - Grant concessions;
  - Make or establish charges, fees, rates, rentals and the like for the use of facilities (including recreational facilities) or for participation;
  - Make and enforce rules and regulations governing the use of property, facilities or equipment and the conduct of persons thereon;
  - Contract with any municipal corporation, governmental, or private agencies for the conduct of park and recreation programs;
  - Operate jointly with other governmental units any facilities including participation in the acquisition;
  - Hold in trust or manage public property;
  - Establish cumulative reserve funds;
  - Acquire, construct, reconstruct, maintain, repair, add to, and operate recreational facilities; and,
  - Make improvements or to acquire property by the local improvement method. (RCW 36.68.120)
- aquariums, and recreational facilities (RCW 36.68.400);
- Make contracts (RCW 36.68.400);
  - Sue and be sued (RCW 36.68.400);
  - Impose and collect use fees or other direct charges on facilities financed by the park & recreation area (RCW 36.68.550);
  - Legislative authority may allow admission fees and charges on persons using facilities located within a park & recreation service area (RCW 36.68.550);
  - Exercise any of the powers enumerated in Ch. 67.20 RCW (Parks, Bathing Beaches, Public Camps) (RCW 36.68.600);
  - Contract with any organization referred to in Ch. 67.20 RCW to conduct recreational program (RCW 67.20.020);
  - Enact and enforce such police regulations not inconsistent with constitution and state laws as necessary for the government and control of the same (RCW 67.20.010);
  - Accumulate reserves for stated capital purpose (RCW 36.68.530);
  - Hire employees and may fund salaries and benefits of county, city, or town park employees who perform work within the service area (RCW 36.68.541);
- boundaries of park district;
- Issue and sell warrants, short-term obligations, or general obligation bonds;
  - Issue revenue bonds;
  - Petition for the creation of local improvement districts;
  - Employ counsel, provide for park police officers, secretary of the board, and all necessary employees;
  - Establish civil service for employees;
  - Regulate, manage and control, improve, acquire, extend and maintain, open and lay out, parks, parkways, boulevards, avenues, aviation landings and playgrounds, within or without the park district;
  - Authorize, conduct and manage:
    - the letting of boats, or other amusement apparatus;
    - the operation of bath houses,
    - the purchase and sale of foodstuffs or other merchandise;
    - the giving of vocal or instrumental concerts or other entertainments;
    - the management and conduct of such forms of recreation or business as it shall judge desirable or beneficial for the public, or for the production of

- Exercise power of eminent domain ([RCW 36.68.555](#)).

revenue for expenditure for park purposes.

- Sell, exchange, or otherwise dispose of surplus property;
- Annex territory.

## Governing Body

### Park and Recreation District

- Board of five commissioners elected from designated districts for staggered, four year terms; election held in conjunction with general election in odd numbered years. ([RCW 36.69.090](#));
- Duties are:
  - Elect chairman, secretary, and such other officers as it may determine it requires;
  - Hold regular public meetings at least monthly;
  - Adopt policies governing transaction of board business, keeping of records, resolutions, transactions, findings and determinations, which shall be of public record;
  - Initiate, direct and administer district park and recreation activities, and select and employ such properly qualified employees as it may deem necessary ([RCW 36.69.120](#)).

### Park and Recreation Service Area

- If within county: Members of county legislative authority, acting ex officio.
- If a city or town is included, or the district is in a multi-county area: Governed by an interlocal cooperation agreement. ([RCW 36.68.400](#)).

### Metropolitan Park District

Board may be composed of any of the following alternatives:

- Five commissioners may be elected at the same election creating the district;
- For a district located entirely within one city or the unincorporated area of one county, the legislative authority of the city or county may act as the metropolitan park board; or
- For a district located in multiple cities or counties, each legislative authority may appoint one or more members to serve as the board;
- The governing structure of an MPD formed before June 13, 2002 may not be changed without the approval of the voters ([RCW 35.61.050](#));
- Vacancies filled in accordance with [Ch. 42.12 RCW](#) ([RCW 35.61.050](#) (2)). If more than one city or county, may fill vacancy by

- Vacancies filled in accordance with [Ch. 42.12 RCW](#).

terms of interlocal agreement ([RCW 35.61.050 \(4\)](#)).

## Government Type

Park and Recreation District	Park and Recreation Service Area	Metropolitan Park District
Municipal corporation ( <a href="#">RCW 36.69.010</a> ).	Quasi-municipal corporation and independent taxing authority and taxing district possessing all the usual powers of a corporation for public purposes ( <a href="#">RCW 36.68.400</a> ).	Municipal corporation ( <a href="#">RCW 35.61.040</a> ).

## Regular Levies and Fees

Park and Recreation District	Park and Recreation Service Area	Metropolitan Park District
<ul style="list-style-type: none"> <li>• 6-year regular property tax levy (maximum of \$0.60 per \$1,000 assessed valuation) authorized when 60% of the voters in an election vote "yes" with a voter turnout equal at least to 40% of those voting in the last general election. Alternatively, as long as the number of "yes" votes is equal to at least 60% times 40% of the number of people voting in the last general election, the measure will pass (<a href="#">RCW 36.69.145</a>).</li> <li>• Limit on regular levy: Levy capacity diminished if aggregate of junior and senior taxing district exceeds the \$5.90 limit. (<a href="#">RCW 84.52.043(2)(a)</a>)</li> <li>• Charges, fees, rates, rentals and use of facilities</li> </ul>	<ul style="list-style-type: none"> <li>• 6-year regular property tax levy (maximum of \$0.60 per \$1,000) authorized when 60% of the voters in an election vote "yes" with a voter turnout equal at least to 40% of those voting in the last general election. Alternatively, as long as the number of "yes" votes is equal to at least 60% times 40% of the number of people voting in the last general election, the measure will pass (<a href="#">RCW 36.68.525</a>).</li> <li>• Limit on regular levy: Levy capacity diminished if aggregate of junior and senior taxing district exceeds the \$5.90 limit (<a href="#">RCW 84.52.043(2)(a)</a>).</li> <li>• May charge fees or other direct charges on facilities (<a href="#">RCW 36.68.550</a>).</li> </ul>	<ul style="list-style-type: none"> <li>• Two regular property tax levies available - one \$0.50 per \$1,000 assessed valuation and one of \$0.25. They are considered one levy for the purposes of the levy limits in <a href="#">Ch. 84.55 RCW</a>, but they have different rankings in the prorationing statute. Levy is permanent.</li> <li>• Conduct forms of recreation or business beneficial for the public, or for the production of revenue for expenditure for park purposes (<a href="#">RCW 35.61.130</a>).</li> </ul>

(including recreational facilities)  
 or for participation ([RCW 36.69.130](#)).

## Excess Levies and Bonds

Park and Recreation District	Park and Recreation Service Area	Metropolitan Park District
<ul style="list-style-type: none"> <li>• Annual excess tax levy proposition for operating funds, capital outlay funds, and cumulative reserve funds as authorized by <a href="#">RCW 84.52.052</a> (<a href="#">RCW 36.69.140</a>);</li> <li>• May issue general obligation debt, equal to 1 1/4 percent of the assessed valuation within the district. Of this 1 1/4 percent, 3/8 percent may be nonvoted (also called councilmanic) debt. The rest must be voted. 60% of those voting must vote "yes" and the voter turnout must be at least 40% of that of the last general election (<a href="#">RCW 36.69.140</a>);</li> <li>• May issue LID bonds. (<a href="#">RCW 36.69.200</a>)</li> <li>• May issue revenue bonds (<a href="#">RCW 36.69.350</a>).</li> </ul>	<ul style="list-style-type: none"> <li>• Annual excess tax levy proposition for operating funds, capital outlay funds, and cumulative reserve funds as authorized by <a href="#">RCW 84.52.052</a> (<a href="#">RCW 36.68.520</a>);</li> <li>• May issue voted general obligation debt equal to 2 1/2 percent of the assessed valuation within the service area. Of this 2 1/2 percent, 3/8 percent may be non-voted (also called councilmanic debt). The rest must be voted. 60% of those voting must vote "yes" and the voter turnout must be at least 40% of that of the last general election (<a href="#">RCW 36.68.520</a>).</li> </ul>	<ul style="list-style-type: none"> <li>• Authorized to levy general tax in excess of its regular property tax levy or levies when authorized to do so at a special election (<a href="#">RCW 35.61.210</a> and <a href="#">RCW 82.52.052</a>);</li> <li>• May issue general obligation debt in an amount equal to 2 1/2 percent of their assessed valuations (<a href="#">RCW 35.61.110</a>). Of this 2 1/2 percent, 1/4 percent may be nonvoted (also called councilmanic) debt (<a href="#">RCW 35.61.100</a>); the rest must be voted.</li> <li>• Can petition city for LID improvements (<a href="#">RCW 35.61.220 - 240</a>);</li> <li>• May issue revenue bonds (<a href="#">RCW 35.61.115</a>).</li> </ul>

## Formation: Initial Steps

Park and Recreation District	Park and Recreation Service Area	Metropolitan Park District
<ul style="list-style-type: none"> <li>• By petition signed by not less than 15% of registered voters</li> </ul> <p><a href="#">Back to top</a></p>	<ul style="list-style-type: none"> <li>• In any unincorporated area by resolution adopted by county</li> </ul>	<ul style="list-style-type: none"> <li>• May include territory located in portions or all of one or more</li> </ul>

residing within the area. The petition shall designate the boundaries or describe the land to be included. It is to set forth the objective and state the benefit of the district ([RCW 36.69.020](#));

- Requires resolution of city or town approving inclusion of the area with the corporate limits of city or town ([RCW 36.69.030](#)).

legislative body or by petition of 10% of registered voters in area. ([RCW 36.68.410](#));

- Contents of petition or resolution to contain:
  - boundaries of the service area
  - description of the purpose or purposes
  - an estimate of the initial cost of any capital improvements or services to be authorized in the service area ([RCW 36.68.420](#));
- May include incorporated cities or towns. Requires resolution of city or town approving inclusion of the area within the corporate limits of city or town ([RCW 36.68.610](#));
- Provision for verification of signatures are found in [RCW 36.68.430](#).

cities or counties, or one or more cities and counties, when created or enlarged;

- Can be initiated by petition of at least 15% of the registered in the area and submitted to the county auditor of each county in which all or a portion of the proposed district would be located ([RCW 35.61.020](#));
- Can be initiated by a resolution of the governing body or bodies of each city and/or county which includes a portion or all of the area in the district;
- Petition or resolution submitting the question to the voters, shall indicate the choice and describe the composition of the initial board of commissioners of the district that is proposed under [RCW 35.61.050](#) and shall list a name for the district ([RCW 35.61.030](#)).

## Feasibility and Cost Studies

Park and Recreation District	Park and Recreation Service Area	Metropolitan Park District
No requirements noted.	Upon accepting petition or on passage of resolution the county legislative body orders an investigation of the feasibility of the proposed service area and determines initial costs. A report is to be available within 80 days of accepting the petition ( <a href="#">RCW 36.68.440</a> ).	None required.

## State Environmental Policy Act (SEPA) Review

Park and Recreation District	Park and Recreation Service Area	Metropolitan Park District
Categorically exempt ( <a href="#">WAC 197-11-800(16)</a> )	Categorically exempt ( <a href="#">WAC 197-11-800(16)</a> )	Categorically exempt ( <a href="#">WAC 197-11-800(16)</a> )

## Public Hearings

Park and Recreation District	Park and Recreation Service Area	Metropolitan Park District
<ul style="list-style-type: none"><li>• The Board of County Commissioners holds a hearing on petition within 60 days of receipt (<a href="#">RCW 36.69.040</a>);</li><li>• Following the hearing, the Board designates a name or number of the district and fixes boundaries (<a href="#">RCW 36.69.050</a>).</li></ul>	<ul style="list-style-type: none"><li>• Within 20 days after the report is available, the county is to hold a hearing on the findings and determine whether the petition is accepted or dismissed (<a href="#">RCW 36.68.460</a>);</li><li>• At the conclusion of the hearing, the County legislative body makes its determination for acceptance or dismissal based on the following:<ul style="list-style-type: none"><li>◦ Whether service areas objectives fit within framework of the county's park comprehensive plan and general park policies;</li><li>◦ Exact boundaries of the service area;</li><li>◦ Full definition or explanation of improvements to be financed;</li><li>◦ Whether or not objectives of the service area are feasible;</li><li>◦ Number or name of service area.</li></ul></li><li>• If satisfactory findings are made by the board of county</li></ul>	<ul style="list-style-type: none"><li>• None required for formation;</li><li>• Hearing is required for annexation.</li></ul>

commissioners, orders an election. If satisfactory findings cannot be made the petition is dismissed.

## Resubmittal of Petition

Park and Recreation District	Park and Recreation Service Area	Metropolitan Park District
No restrictions noted.	If rejected a new petition for the same area cannot be submitted for two years ( <a href="#">RCW 36.68.460</a> ).	Not addressed.

## Election to Form District

Park and Recreation District	Park and Recreation Service Area	Metropolitan Park District
<ul style="list-style-type: none"> <li>• Ballot proposition authorizing the park and recreation district is submitted to voters at next general state election occurring 60 or more days after board fixes boundaries;</li> <li>• Initial park and recreation commissioners are elected at same election;</li> <li>• Ballot proposition shall be stated in such manner that the voters may indicate yes or no upon the proposition forming the proposed park and recreation district (<a href="#">RCW 36.69.070</a>);</li> <li>• Proposition for initial capital or operational costs can be included at same general election (regular property text, excess levy or GO Bonds and bond retirement levy)</li> </ul>	<ul style="list-style-type: none"> <li>• If satisfactory findings are made as outlined in <a href="#">RCW 36.68.460</a>, the county legislative authority orders an election of the voters in the proposed service area to take place at the next general election or at a special election held for such purpose (<a href="#">RCW 36.68.470</a>);</li> <li>• Ballot proposition form is in <a href="#">RCW 36.68.470</a>;</li> <li>• Proposition for initial capital or operational costs can be included at same general election (regular property text, excess levy or GO Bonds and bond retirement levy) to create district (<a href="#">RCW 36.68.480</a>).</li> <li>• Requires approval by a simple majority (<a href="#">RCW 36.68.500</a>).</li> </ul>	<ul style="list-style-type: none"> <li>• <b>Where No Boundary Review Board Exists</b> <ul style="list-style-type: none"> <li>◦ Proposition authorizing creation of a MPD shall appear at the next general election, or at the next special election date specified under <a href="#">RCW 29A.04.330</a> occurring 60 or more days after the last resolution proposing the district is adopted, or the date the county auditor certifies the petition;</li> <li>◦ Where a petition is filed with two or more county auditors, the county auditors shall confer and issue a joint certification.</li> </ul> </li> <li>• <b>Where Boundary Review Board Exists</b></li> </ul>

to create district ([RCW 36.69.070](#)).

- Requires approval by a simple majority ([RCW 36.69.080](#)).

- Notice of the proposal shall be filed with the boundary review board;
- A special election is held on the date specified under [RCW 29A.04.330](#) that is 60 or more days after approved by boundary review board;
- No boundary review board review required if the proposed district only includes one or more cities.

- Ballot proposition to contain words:

"For the formation of a metropolitan park district to be governed by [insert board composition described in ballot proposition]."

"Against the formation of a metropolitan park district."

- Requires approval by a simple majority ([RCW 35.61.040](#)).
- Election of commissioners see Governing Body Alternatives on [Metropolitan Park Districts page](#).

## Fiscal Administration

### Park and Recreation District

- County treasurer is treasurer of district. ([RCW 36.69.150](#));

### Park and Recreation Service Area

- County treasurer is treasurer of service area;

### Metropolitan Park District

- County treasurer of the county within which all, or the major portion, of the district lies is the

- All expenditures are paid by warrants drawn by county auditor on county treasurer, pursuant to vouchers approved by the district board ([RCW 36.69.150](#));
- District commissioners must compile an annual budget including all available funds and anticipated income for the ensuing year. Budget may include cumulative reserve for capital purposes ([RCW 36.69.160](#));
- District commissioners must compile an annual budget including all available funds and anticipated income for the ensuing year. Budget may include cumulative reserve for capital purposes ([RCW 36.69.160](#)).
- Annual budget required in form prescribed by state auditor. May include cumulative reserve for capital purposes, all available funds and all anticipated income shall be included ([RCW 36.68.530](#));
- May contract with county to administer purchasing ([RCW 36.68.570](#));
- Legislative authority may transfer proceeds from concessions for food and other services accruing to the county from food and other services from park or park facility in park and recreation service area to service area budget ([RCW 36.68.560](#));
- May reimburse county for charges incurred by county current expense fund for expense of service area ([RCW 36.68.570](#)).
- ex officio treasurer the district. The district can designate someone else, if the board has received the approval of the county treasurer ([RCW 35.61.180](#));
- Contracts are to be by competitive bidding or small works roster ([RCW 35.61.135](#)).

## Annexation/Enlargement

### Park and Recreation District

- Same procedure as creating district and all electors of district and proposed additional territory vote ([RCW 36.69.190](#)).

### Park and Recreation Service Area

- Same procedure as creating the parks and recreation service area, by resolution or petition with vote of all electors in existing area plus proposed addition ([RCW 36.68.620](#)).

### Metropolitan Park District

- Territory by virtue of its annexation to any city that lies entirely within a park district shall be deemed to be within the limits of the metropolitan park district;
- Such an extension of a park district's boundaries shall not be subject to review by a boundary review board independent of the board's review of the city

annexation of territory ([RCW 35.61.020](#));

- The territory adjoining a metropolitan park district may be annexed into the district upon petition and an election:
  - The petition shall define the territory proposed to be annexed and must be signed by 25 registered voters, resident within the territory proposed to be annexed; unless
  - The territory is within the limits of another city then it must be signed by 20% of the registered voters residing within the territory proposed to be annexed ([RCW 35.61.250](#)).

## Dissolution

### Park and Recreation District

- In the manner provided in [Ch. 53.48 RCW](#) relating to port districts;
- For county with population of 210,000 or more and inactive for five years see [Ch. 57.90 RCW](#);
- See procedures outlined in [Ch. 36.96 RCW](#) - Dissolution of inactive special purpose districts.

### Park and Recreation Service Area

- In the manner provided in [Ch. 53.48 RCW](#) relating to port districts;
- See procedures outlined in [Ch. 36.96 RCW](#) - Dissolution of inactive special purpose districts.

### Metropolitan Park District

- A district may be dissolved by majority vote of members;
- Upon dissolution the district's liabilities are prorated, and turn over to the city and/or county to the extent the district was respectively located in each, when:
  - (1) Such city and/or county, through its governing officials, agrees to, and petitions for, such dissolution and the

assumption of such assets and liabilities, or;

- (2) Ten percent of the voters of such city and/or county who voted at the last general election petition the governing officials for such a vote. ([RCW 35.61.310](#))
- Disincorporation of district located in county with a population of 210,000 or more and inactive for five years, see [Ch. 57.90 RCW](#).

## Legislative History

### Park and Recreation District

Ch. 58 Laws of 1957 authorized class AA counties to establish Park and Recreation Districts. Second, eighth, and ninth-class counties were given similar authority in 1959. No districts were formed under the original Recreation District Act for Counties. According to a 1982 Interagency Committee for Outdoor Recreation (IAC) survey 25 districts were formed after 1970 and ten after 1980. Most were formed to provide general recreation services or were formed solely to finance a new swimming pool or finance an existing one.

*Recreation Resources: A Heritage for the Future, IAC 1986. Number: 54/56*

### Park and Recreation Service Area

Ch. 218 Laws of 1963 gave first class counties authority to establish park and recreation service areas in unincorporated areas within the county. In 1965 the authority to was extended to all counties. The ability to fund zoos and aquariums was added in 1985.

### Metropolitan Park District

Chapter 98, Laws of 1907 authorized cities of the first class to create metropolitan park districts (MPD). The statutes were amended by Chapter 88, Laws of 2002.

Prior to 2002, cities under 5,000 and counties could not create metropolitan park districts. Now all cities and counties may form metropolitan park districts (MPDs) that include territory in portions of one or more cities or counties.

The first MPD was formed by Tacoma in 1907. A second district was formed in Yakima around 1945 and functioned until 1969. After the 2002 amendments, a number of